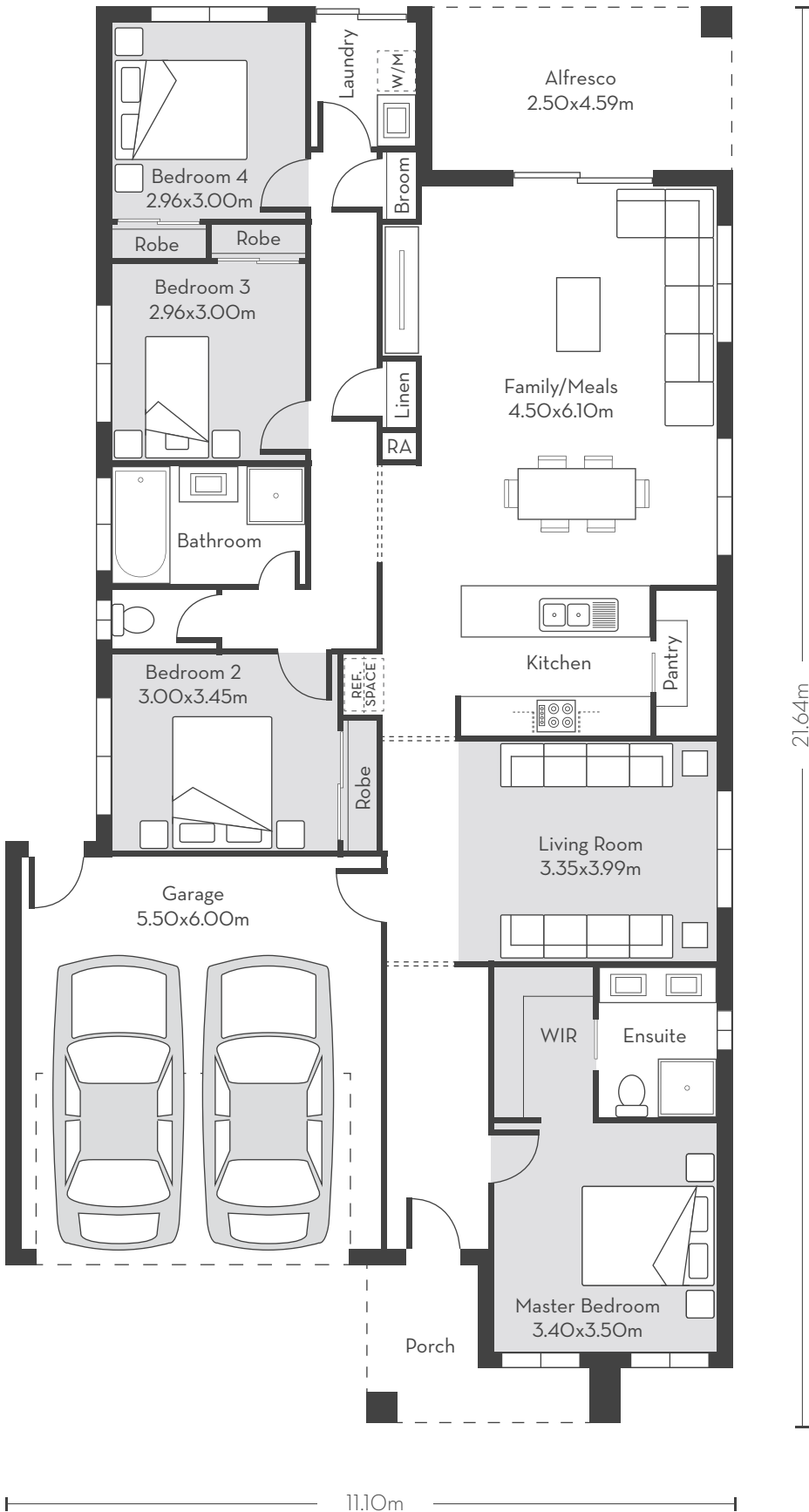


LONDON 22

The London 22 delivers a complete lifestyle requiring a 28m deep lot (350m²).

In this design the master bedroom is located on the opposite side of the home as opposed to the other three bedrooms. With a separate living room and an alfresco, the London 22 provides the complete package.

AREA	m ²	sq
Residence	154.31 m ²	16.61 sq
Alfresco	11.48 m ²	1.24 sq
Garage	36.09 m ²	3.88 sq
Porch	5.97 m ²	0.64 sq
TOTAL	207.84 m ²	22.37 sq



- 4
- 2
- 2
- 1
- 2